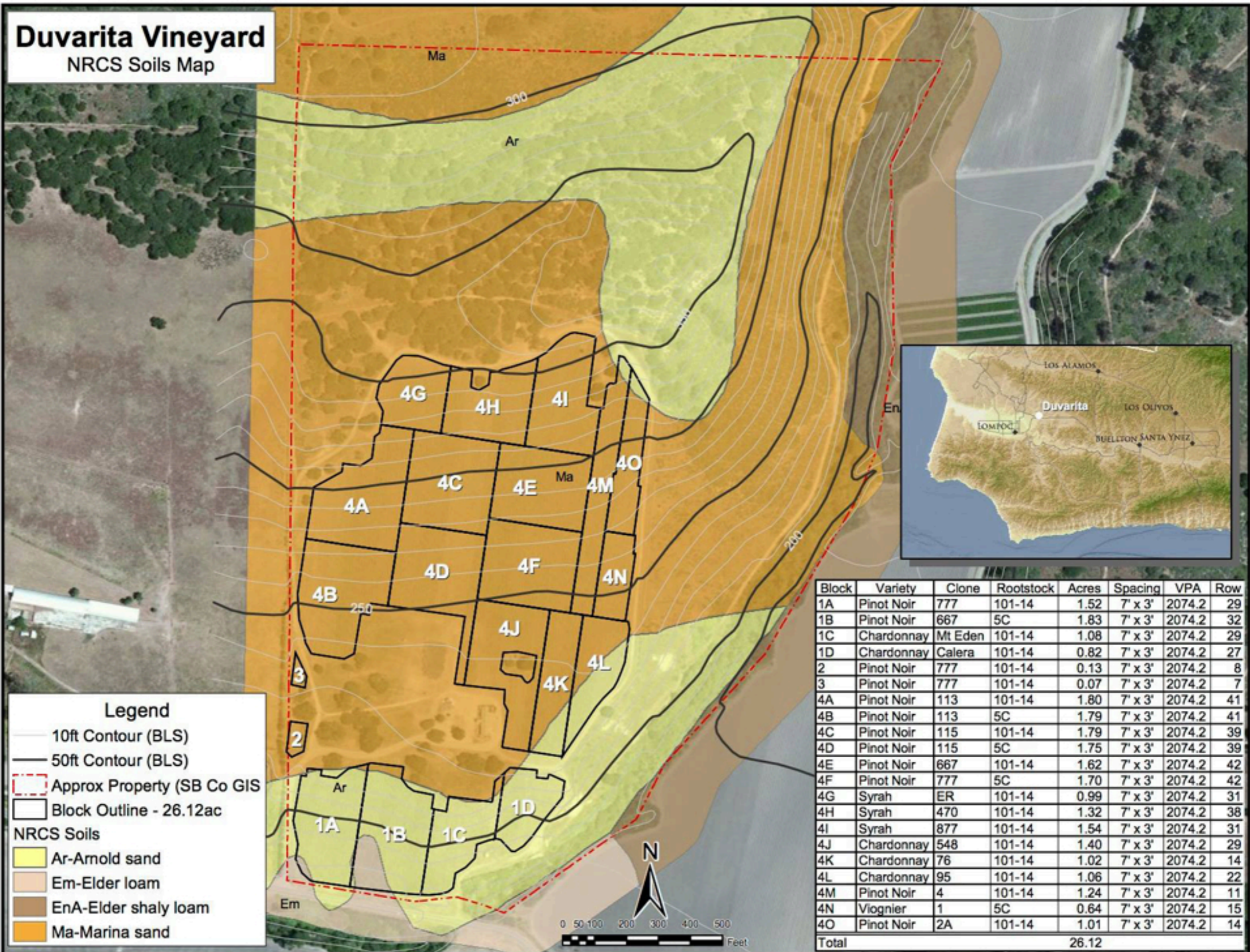


Duvarita Vineyard

NRCS Soils Map



Legend

- 10ft Contour (BLS)
- 50ft Contour (BLS)
- Approx Property (SB Co GIS)
- Block Outline - 26.12ac

NRCS Soils

- Ar-Arnold sand
- Em-Elder loam
- EnA-Elder shaly loam
- Ma-Marina sand

| Block | Variety | Clone | Rootstock | Acres | Spacing | VPA | Row |
|--------------|------------|---------|-----------|-------|---------|--------------|-----|
| 1A | Pinot Noir | 777 | 101-14 | 1.52 | 7' x 3' | 2074.2 | 29 |
| 1B | Pinot Noir | 667 | 5C | 1.83 | 7' x 3' | 2074.2 | 32 |
| 1C | Chardonnay | Mt Eden | 101-14 | 1.08 | 7' x 3' | 2074.2 | 29 |
| 1D | Chardonnay | Calera | 101-14 | 0.82 | 7' x 3' | 2074.2 | 27 |
| 2 | Pinot Noir | 777 | 101-14 | 0.13 | 7' x 3' | 2074.2 | 8 |
| 3 | Pinot Noir | 777 | 101-14 | 0.07 | 7' x 3' | 2074.2 | 7 |
| 4A | Pinot Noir | 113 | 101-14 | 1.80 | 7' x 3' | 2074.2 | 41 |
| 4B | Pinot Noir | 113 | 5C | 1.79 | 7' x 3' | 2074.2 | 41 |
| 4C | Pinot Noir | 115 | 101-14 | 1.79 | 7' x 3' | 2074.2 | 39 |
| 4D | Pinot Noir | 115 | 5C | 1.75 | 7' x 3' | 2074.2 | 39 |
| 4E | Pinot Noir | 667 | 101-14 | 1.62 | 7' x 3' | 2074.2 | 42 |
| 4F | Pinot Noir | 777 | 5C | 1.70 | 7' x 3' | 2074.2 | 42 |
| 4G | Syrah | ER | 101-14 | 0.99 | 7' x 3' | 2074.2 | 31 |
| 4H | Syrah | 470 | 101-14 | 1.32 | 7' x 3' | 2074.2 | 38 |
| 4I | Syrah | 877 | 101-14 | 1.54 | 7' x 3' | 2074.2 | 31 |
| 4J | Chardonnay | 548 | 101-14 | 1.40 | 7' x 3' | 2074.2 | 29 |
| 4K | Chardonnay | 76 | 101-14 | 1.02 | 7' x 3' | 2074.2 | 14 |
| 4L | Chardonnay | 95 | 101-14 | 1.06 | 7' x 3' | 2074.2 | 22 |
| 4M | Pinot Noir | 4 | 101-14 | 1.24 | 7' x 3' | 2074.2 | 11 |
| 4N | Viognier | 1 | 5C | 0.64 | 7' x 3' | 2074.2 | 15 |
| 4O | Pinot Noir | 2A | 101-14 | 1.01 | 7' x 3' | 2074.2 | 14 |
| Total | | | | | | 26.12 | |